

50



Tips and Tricks Booklet Volume 1

2007



Categories

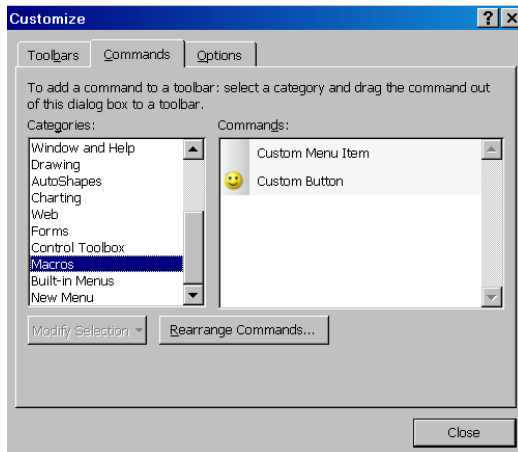
TOOLBARS	3
NAVIGATING	4
PIVOTTABLE	5
FUNCTIONS	8
CHARTS	14
FILTERING	15
FORMATTING	16
CONDITIONAL FORMATTING	20
SHORTCUTS	23
PAGESETUP	24
HYPERLINKS	28
EXCEL OPTIONS	29
SORTING	30
SUBTOTALS	31

Alchemex Contact Information	
Sales	sales@alchemex.com
Support	support@alchemex.com
Website	www.alchemex.com
Forum	www.alchemex.ning.com
Online Academy	www.alchemexacademy.com
Knowledgebase	www.alchemex.com
Free Trial Software download	www.alchemex.com
Customer References	www.alchemex.com
If you know of anyone who will benefit from using Alchemex - PLEASE contact Sales.	

TOOLBARS

1. How to add Macros into your toolbar.

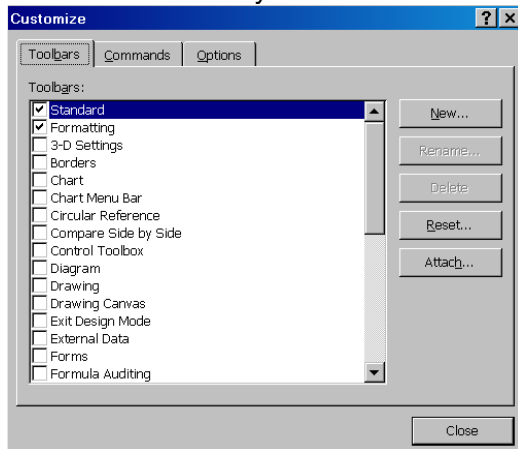
- a. From the **Menu** bar select **Tools, Customise**.
- b. Select the **Commands** tab.



- c. In the list of **Categories**, select **Macros**.
- d. The macro should then appear in the **Commands** list.
- e. In the **Commands** list, select **Custom Button** and drag the button onto the toolbar.
- f. To assign the macro, select **Modify Selection** and select **Assign Macro**.
- g. Select the desired **Macro** from the list and select **OK**.

2. How to get your Toolbar back to Microsoft Excel's default layout.

- a. From the **Menu** bar select **Tools, Customise**.
- b. Select the **Toolbars** tab.
- c. Select the Toolbar you would like to reset.

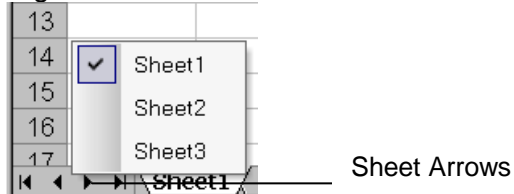


- d. Select **Reset**.

NAVIGATING

3. How to navigate to different sheets in a workbook with many sheets.

- a. Right click on the sheet arrows at the bottom left of your screen.



- b. A list of the sheets in the file will be displayed.
c. Left click on the sheet name you would like to navigate to.

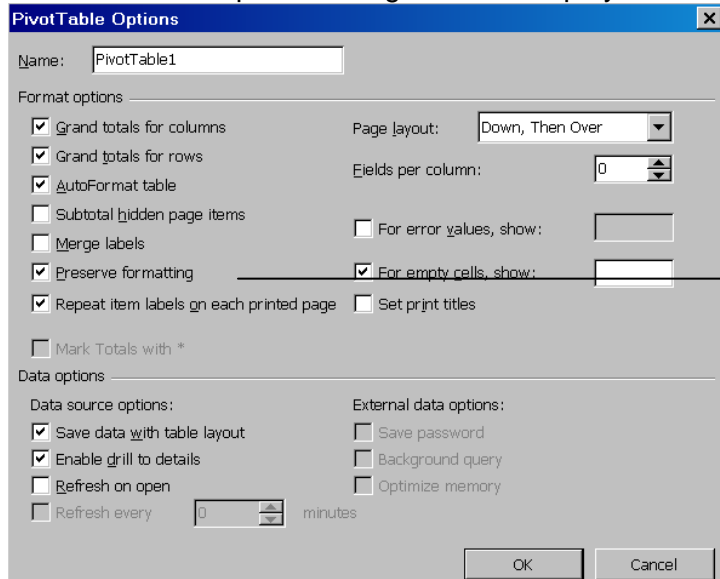
4. There are two ways to quickly select a row

- a. Select the row number.
OR
b. Select any cell in that row and press Shift+Space bar.

PIVOTTABLE

5. To maintain formatting when refreshing PivotTables one must:

- Format the PivotTable in whatever way you want.
- On the **PivotTable** toolbar, select **Table Options** from the menu.
- The PivotTable Options dialogue box is displayed.



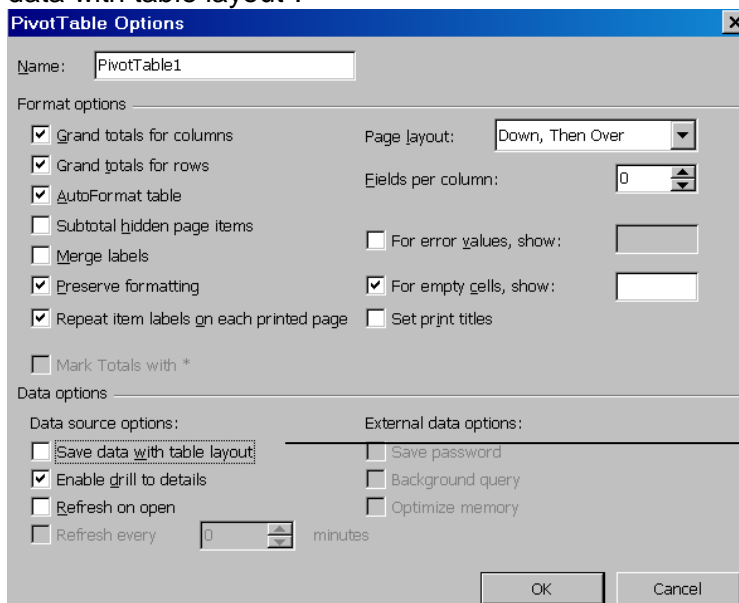
Preserve Formatting

- Make sure the **Preserve formatting** check box is selected.
- Select **OK**.

6. The size of an Excel file increases when a PivotTable is included. To reduce the file size one must do the following:

PivotTables by default always save the actual data with the layout of the table and this causes the increase in the size of the file. You can however change this on the table options of the PivotTable. Once you have changed this, you will always have to refresh the table before you can use it.

- a. Right click anywhere on the **PivotTable**.
- b. Select **Table** Options from the shortcut menu.
- c. Clear the checkbox towards the bottom of the options window "save data with table layout".



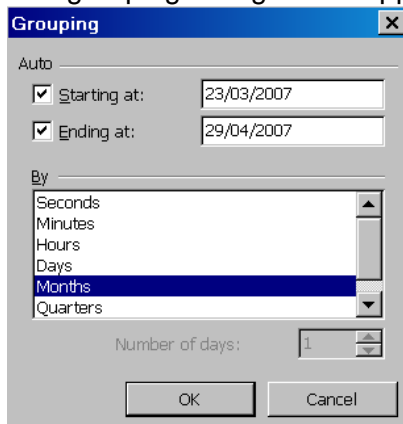
Save Data with Table Layout

- d. Select **OK**, and then save the file. The file should have reduced in size.

7. How to group your dates into Months or Quarters in a PivotTable.

This can be easily done by using the Grouping feature in the PivotTable.

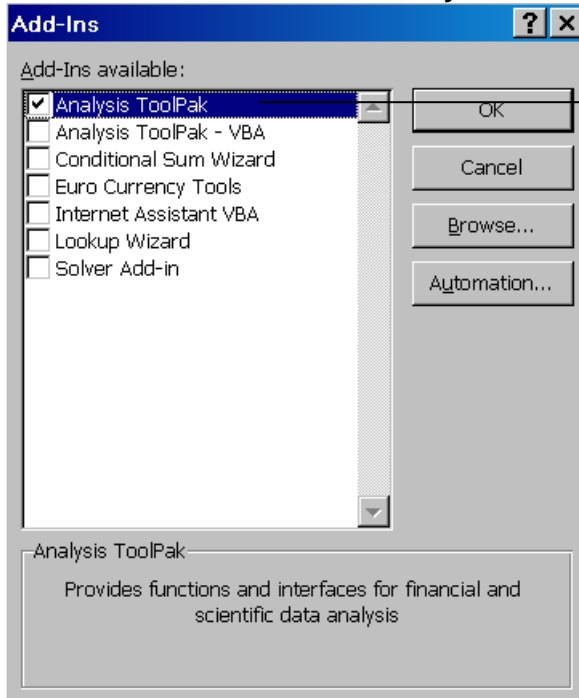
- a. Select the **field (Date)** you wish to group.
- b. Right click and select **Group and Show Detail**.
- c. Select **Group**.
- d. The grouping dialogue box appears displaying dates and times.



- e. Type the starting and ending information in the fields provided.
- f. Select the option you wish to group by in the **By** list
- g. Select **OK**.
- h. Group dates will only work if you have **NOT** got blank cells selected in the source data. If you do have blank cells selected, please re-select the area.

FUNCTIONS

8. There is a function in Excel called "weeknum" which determines the number of the week within the year. This is not a standard function; it is only available if you use the Excel Add-Ins 'Analysis Tool-Pak'.
- Select the **Tools** menu.
 - Select **add-ins**. The add-ins box will display.
 - Select the check box next to **Analysis Tool-Pak**.



Analysis Tool-pak

- Select **OK**.
- The function Weeknum should now be available in the data and time category of functions.

9. If you have values in the cells D2 through to D1044 and you want to create a formula in column E and quickly copy the formula from E2 through to E1044, try this:

a. Enter your formula into cell E3

	A	B	C	D	E
1	Branch	SalesPerson	Quantity	UnitPrice	ProductSales
2	East Coast	Anderson. P	60	7.20	432.00
3	East Coast	Johnson. A	21	13.90	
4	East Coast	Peters. K	40	11.20	
5	East Coast	Bonders. P	2	14.70	
6	East Coast	Newson. L	5	15.20	

- b. Place your mouse on the bottom right corner of cell E1 and double click on the **Autofill** handle.
- c. The formula will then be copied down to cell E1044
- d. By double clicking it will automatically fill the range down to where there is data on the left in Column A. You can also use this for copying formula down.

10. To count the number of cells containing data you can do the following.

Use the correct count function:

- **Count:** Counts the number of cells containing numbers, as well as numbers within the list of arguments.
- **Count A:** Counts the number of cells that are not empty, as well as the values within the list of arguments.
- **CountBlank:** Counts empty cells in a specified range of cells
- **CountIF:** Counts using criteria

See screenshot below:

Text / Number	Result	Criteria	Formulas Syntax
2	9		=COUNT(A:A)
4	13		=COUNTA(A:A)
6	65523		=COUNTBLANK(A:A)
3	8	>2	=COUNTIF(A:A,C6)
5	4	*	=COUNTIF(A:A,C7)
7	3	11	=COUNTIF(A:A,C8)
11	3	A*	=COUNTIF(A:A,C9)
11	1	*ch*	=COUNTIF(A:A,C10)
11	1	???	=COUNTIF(A:A,C11)
AAA			
A			
Alchemex			

11. How to calculate the number of month's service for an employee.

Use the "DATEDIF" function

- a. The date employed is in cell A2 and the current date is in cell B2.

	A	B	C
1	Date Employed	Current Date	Months
2	20/11/2005	28/11/2007	

- b. Select cell C2 and enter = (DATEDIF(A2,B2,"Y")*12)+DATEDIF(A2,B2,"YM")
 c. Format to number.

C2 fx = (DATEDIF(A2,B2,"Y")*12)+DATEDIF(A2,B2,"YM")

	A	B	C	D	E	F
1	Date Employed	Current Date	Months			
2	20/11/2005	28/11/2007	24			

12. To separate a column of mixed positive and negative figures into two different columns the 'IF' formula must be used.

- a. In your example your data is in A2:A6.

	A	B	C
1		Positive	Negative
2	-23		
3	67		
4	-90		
5	88		
6	78		

- b. In B2 enter the formula: =IF(A2>=0,A2,"").
 c. In C2 enter the formula: =IF(B2="",A2,"").
 d. Copy the formula down.

	A	B	C
1		Positive	Negative
2	-23		-23
3	67	67	
4	-90		-90
5	88	88	
6	78	78	

13. You can format telephone numbers to look a certain way e.g 213456543 to (021) 345-6543. You can do this by using a combination of Text functions.

	A	B
	Original Telephone Number	Formatted Telephone Number
13		
14	218642603	(021) 864-2603

=("&"0"&LEFT(A14,2)&")"&" "&MID(A14,3,3)&"- "&MID(A14,6,15)

Explanation:

- In-between the " " is the additional text such as - ().
- The & symbol is joining the items together.
- The LEFT is to extract the first 2 digits (area code) – 21.
- The first MID is to extract from the 3rd digit and 3 digits after that – 864.
- The second MID is to extract from the 6th digit and 15 digits after that – 2603.
- A14 is the cell where the original telephone number is, if necessary change that cell reference to where your first telephone number is and copy the formula down.
- Simply copy and paste this formula to the relevant cell, ensuring you change the cell reference A14 to whichever cell your telephone number is in.

14. How to format a number without decimal places, with a thousands separator, and combine it with text, using custom formatting and joining cells.

For example, Cell A1 contains "You owe" and cell B1 contains the value 87777.

In cell C1 enter the following formula =A1&" "&TEXT(B1,"R#,##0").

	A	B	C	D	E
1	You owe	87777	You owe R87,777		
2					

15. A formula can be used to work out somebody's age

A person's age is the amount of time since they were born. To calculate their age, put today's date in one cell and the person's date of birth in another cell, then take their date of birth away from today and you get their age - right? Well, sort of... you get a number. Because you took a date serial from another date serial you get the number of days in between.

In this example the formula in cell **A3** is:
=A1-A2

	A	B
1	15/08/00	<i>Today</i>
2	27/09/50	<i>Date of Birth</i>
3	18220	<i>Age</i>
4		

We need to convert this number of days into a number of years. Most years have 365 days but every fourth year has 366 days. So the average number of years is 365.25.

In this example the formula in cell **A3** is:
=(A1-A2)/365.25

	A	B
1	15/08/00	<i>Today</i>
2	27/09/50	<i>Date of Birth</i>
3	49.883641	<i>Age</i>
4		

Note the brackets around the first part of the formula. Brackets mean "Work out this bit first..." They are used stop Microsoft Excel trying to divide A2 by 365.25 before taking it away from A1. The number is now in years, but it's still not quite right. The result is accurate but don't really want to see the fraction. As a last refinement we'll wrap the whole thing inside an **INT()** function to give us a whole number (an *integer*). This is better than changing the number of decimal places displayed, which would risk some numbers being rounded up and giving an incorrect result.

In this example the formula in cell **A3** is:
=INT((A1-A2)/365.25)

	A	B
1	15/08/00	<i>Today</i>
2	27/09/50	<i>Date of Birth</i>
3	49	<i>Age</i>
4		

16. There is no Average IF function in Excel 2003 but you can create your own Average IF using a CSE.

An array formula (CSE) can perform multiple calculations and then return either a single result or multiple results. Array formulas act on two or more sets of values known as array arguments. Each array argument must have the same number of rows and columns. You create array formulas in the same way that you



create other formulas, except you press CTRL+SHIFT+ENTER to enter the formula. You will notice that by using CTRL+SHIFT+ENTER it adds curly brackets around the formula. This is what makes it a CSE formula.

Process: **See the example below:**

B18		fx {=AVERAGE(IF(\$A\$2:\$A\$14=A18,C2:C14))}				
	A	B	C	D	E	
1	Region	Date	Value			
2	North Coast	01/01/06	12000			
3	North Coast	12/03/06	23500			
4	East Coast	23/03/06	14500			
5	North Coast	15/04/06	14500			
6	West Coast	10/05/06	16700			
7	East Coast	21/05/06	14000			
8	West Coast	13/06/06	23000			
9	East Coast	26/06/06	10000			
10	West Coast	05/07/06	22000			
11	East Coast	12/08/06	17000			
12	East Coast	22/08/06	23890			
13	East Coast	22/09/06	35000			
14	West Coast	10/10/06	18400			
15						
16						
17	Average of Values:					
18	East Coast	19065				
19	West Coast	10250				
20	North Coast	14333				
21						

CHARTS

17. Going through the ChartWizard can take a while. To put a chart into your workbook quickly, you can follow these two simple steps:

- a. Select the table on which the chart is to be based.
- b. Press **F11**.

That's It! Excel inserts a new Chart worksheet before the current worksheet, and bases the chart on the data in your table and the default chart type you have set up. At this point you can perform whatever customisation you desire on the chart and work with it as normal.

18. If you want to create a Chart that has both a line series and a column series plotted on the same Chart, a Custom Types chart must be used.

If the Chart is already created:

- a. **Right** click on the chart you have created (on the chart area).
- b. Select Chart Types.
- c. Select Custom Types.
- d. Select **Line-column**.
- e. Select **OK**.

If you are creating a new Chart:

- a. Select the **area** you would like to **Chart**.
- b. Select the **Chart Wizard** button on the **Standard** toolbar.
- c. Select the **Heading** tab, **Custom Types**.
- d. Select **Line-column**.
- e. Complete the rest of the Chart Wizard.

19. Using a Chart Title that is linked to your worksheet enables you to simply update your worksheet and your Chart Title will automatically update.

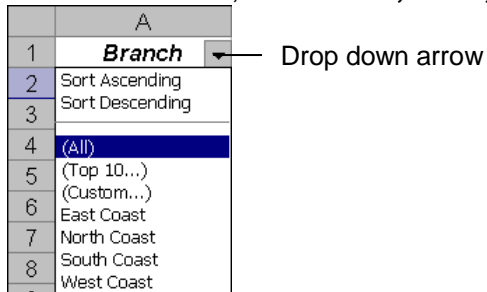
- a. Create the chart as you would normally do.
- b. Select the title you want to modify. Small handles should appear around the title.
- c. In the formula bar enter the address of the cell you want to use for the title. For instance, if the title is in cell A5 of the Data worksheet, you would enter the following in the formula bar:

=Data!\$A\$6

FILTERING

20. To quickly filter a list to summarise information, Filtering in Excel can be used.

- Select anywhere in the list.
- On the **Menu bar**, select **Data, Filter, Auto filter**.



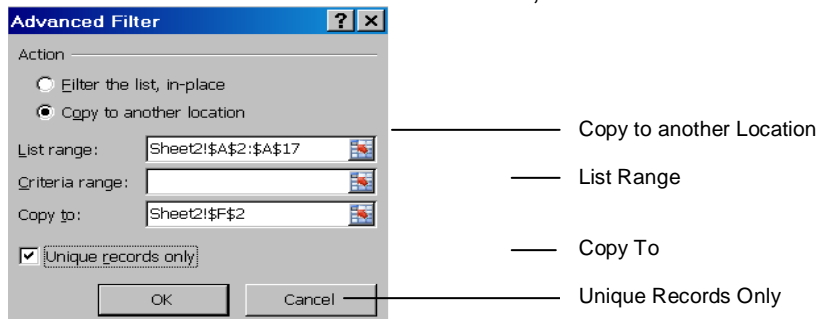
- Use the drop down arrows to filter your list.

21. If the same list of items is continually used, the easy way to insert the list without having to re-type it all the time is by using an **AUTOFILL LIST**.

- Select **Tools, Options** then select the **Custom Lists** tab.
- Type the first item in the **List Entries** box and enter.
- Type the rest of your items pressing enter after each one except the last one.
- Select **OK**.
- To use the list, enter any of the items in a cell then drag the cells Autofill handle (bottom right hand corner) down or across.

22. You can extract a list of unique items, from a list, by using the **Advanced Filter**.

- Select the **worksheet** where you would like the extracted list to appear.
- On the **Menu bar** select **Data, Filter Autofilter**.



- Select **Copy to another location**.
- In the **List range**, select the list of items that you are extracting unique records from.
- In the **Copy to**, select the first cell in the range that you would like to have your results showing.
- Select the check box for **Unique records only**. Select **OK**.

FORMATTING

23. To remove ALL spaces from a cell (as the TRIM function leaves one space in the middle), Find and Replace must be used.

- Select the range of cells you would like to remove the space from.
- Press **Ctrl + H**.
- Click on the **Find What** box and press the space bar once.
- Ensure the **Replace with** box has nothing in it.
- Select **Replace all**.

24. If you receive data in one column and you need to extract the data into different columns, you can do this by using the 'Text to Columns' wizard.

- Select the cells that contain the text or values.

	A	B
1	Account	Sub Account
2	100/300	
3	1001/4001	
4	10/200	
5	200/300	

- On the **Menu** bar, select, **Data, Text to Columns, Next**.
- Select the **Delimiter** that separates the items.
- Select **Finish**.

	A	B
1	Account	Sub Account
2	100	300
3	1001	4001
4	10	200
5	200	300

25. To change a font type to Sentence case in Microsoft Excel, VB code must be inserted to the worksheet.

- a. Open the required **workbook**.
- b. **Right** click on any worksheet.
- c. Select **View Code**.
- d. On the left, select **This workbook**.

On the **right** side paste the below coding:

```
Sub TextIt_Click()  
  
'Modified Text converter  
' Option to select range of cells or correct entire worksheet.  
  
Dim TextCaseAlch As Range  
  
Set TextCaseAlch = Selection.SpecialCells(xlCellTypeConstants, 2)  
  
For Each cell In TextCaseAlch.Cells  
s = cell.Value  
Start = True  
For i = 1 To Len(s)  
ch = Mid(s, i, 1)  
Select Case ch  
Case "."  
Start = True  
Case "!"  
Start = True  
Case "?"  
Start = True  
Case "a" To "z"  
If Start Then ch = UCase(ch): Start = False  
Case "A" To "Z"  
If Start Then Start = False Else ch = LCase(  
End Select  
Mid(s, i, 1) = ch  
Next  
cell.Value = s  
Next  
End Sub
```

26. To quickly format from one cell to a range of cells, FORMAT PAINTER should be used.



- a. Select the **cell or range** that contains the formats you wish to copy.
- b. Select the **Format Painter** icon. (the yellow paintbrush icon on the Standard toolbar)
- c. Click and drag the mouse over the range you want to paint - Excel then applies the copied formats to the selected cells and automatically deactivates the painter.
- d. If you need to copy formats to a range or multiple cells, double-click the Format Painter to keep it active. Pressing the Esc key deactivates the painter once finished.

27. By pressing Alt-Enter you force a new line within a cell.

- a. Press F2 to edit a cell
- b. Type the text you need on the first line
- c. Press Alt-Enter, and then type again.

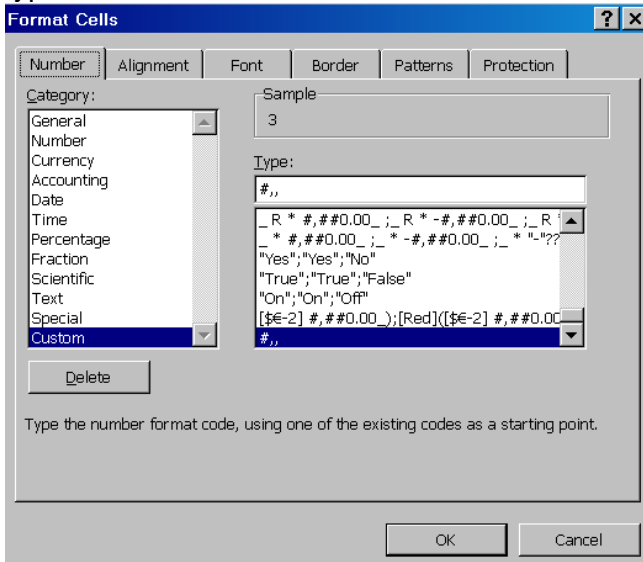
The contents of your cell are split onto 2 lines regardless of the width of the column. Some people use wrap text to wrap the text onto 2 lines but this is not a permanent format since the text will adjust accordingly when you widen the column and you could easily end up with the text on one line again.

28. To get numbers to display as only thousands or millions, you change the number format of the cell.

- a. Select the **cell/cells** to be changed.

	A	B
1	Amount	
2	3000000	
3	4588900	
4	7866999	
5	1255590	

- b. Select **Format, Cells**, select the **Number** tab, choose **Custom** as the category, then in the **Type** box, type in as follows:



for thousands enter #,
for millions enter #,,

- c. Select **OK**.

	A	B
1	Amount	
2		3
3		5
4		8
5		1

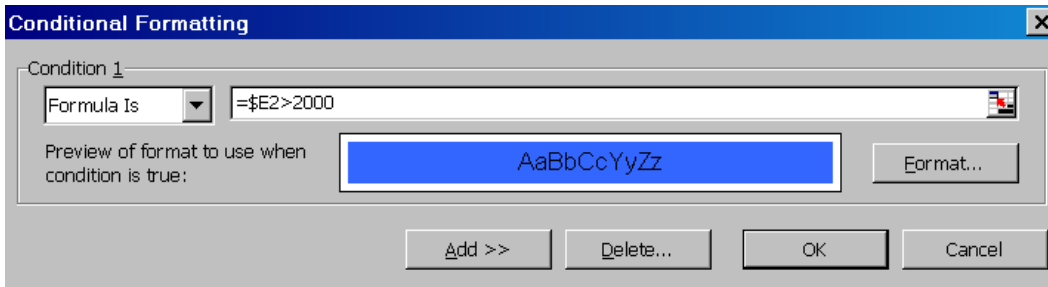
CONDITIONAL FORMATTING

29. To apply conditional formatting to an entire row, fix your cell reference for the column.

You can apply conditional formatting that checks the value in one cell, and applies formatting to other cells, based on that value. For example, you could colour the entire row in a table, if the values in column E are over a set value (2000).

	A	B	C	D	E
1	Category Name	Product Name	Date	Month	Product Sales
2	Dairy Products	Blue Cheese	03/04/2006	April	5568
3	Dairy Products	Blue Cheese	04/04/2006	April	1566
4	Dairy Products	Blue Cheese	04/04/2006	April	3480
5	Dairy Products	Cheese Sticks	07/04/2006	April	4840
6	Dairy Products	Cheese Sticks	10/04/2006	April	1980
7	Dairy Products	Blue Cheese	11/04/2006	April	1392

- Select the cells to be formatted (A2:E).
- From the **Menu** bar select **Format, Conditional Formatting**.
- Enter the below and select **OK**:



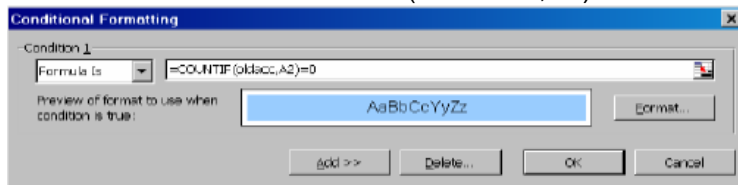
- In this example, the formula is `=$E2>2000`.

30. If you need to compare two lists and identify the items that are different, this can be done by using a combination of Conditional Formatting and the COUNTIF function.

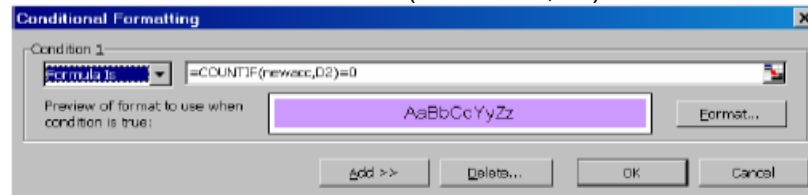
	A	B	C	D
1	New Account Numbers			Old Account Numbers
2	10002			10001
3	10003			10003
4	10004			10004
5	10005			10005
6	10008			10008
7	10007			10007
8	10008			10008
9	10009			10009
10	10010			10013
11	10011			10014
12	10012			10015
13	10013			10016
14	10014			10017
15	10015			10018
16	10016			10019

The first list is in A2:A16 and this range is named *newacc*. The second list is in D2:D16, and the range is named *oldacc*. The ranges were named using the Insert - Name – Define Command. Naming the ranges is not necessary, but it makes them easier to work with. As you can see, items in *newacc* that do not appear in *oldacc* are highlighted with a blue background. Items in *oldacc* that do not appear in *newacc* are highlighted with a purple background. These colors are the result of Conditional Formatting. Select the *newacc* range.

- On the **Menu** bar, select **Format, Conditional Formatting**.
- Enter in the below: `=COUNTIF(OLDACC,A2)=0`.



- Select the *oldacc* range.
- On the **Menu** bar, select **Format, Conditional Formatting**.
- Enter in the below: `=COUNTIF(NEWACC,D2)=0`.



- The COUNTIF function counts the number of times a particular value appears in a range. If the formula returns 0, it means that the item does not appear in the range. Therefore, the conditional formatting kicks in and the cell's background color is changed.

31. To highlight duplicate items in a column, a combination of Conditional Formatting and the `=COUNTIF` function must be used.

a. Select the range of cells.

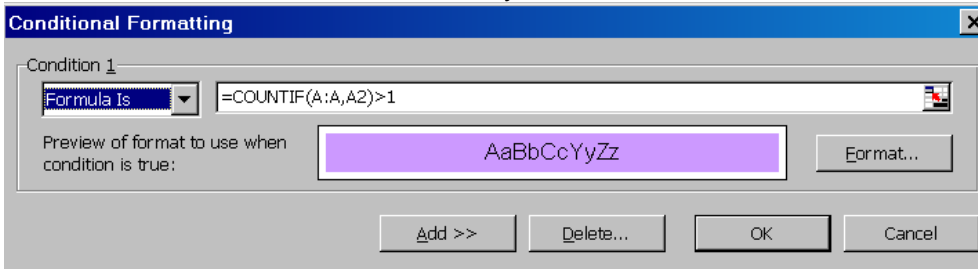
	A	B
1	Invoice No.	
2	INV8890	
3	INV2355	
4	INV4180	
5	INV1071	
6	INV1725	
7	INV8890	

b. On the **Menu** bar, click on **Format, Conditional Formatting.**

c. Under Condition 1, select **Formula Is.**

d. In the formula =COUNTIF(column range you are in, cell you are in)>1.

e. Select **Format** and select a Pattern of your choice.



Conditional Formatting

Condition 1

Formula Is =COUNTIF(A:A,A2)>1

Preview of format to use when condition is true: AaBbCcYyZz Format...

Add >> Delete... OK Cancel

f. Click on **OK.**

	A	B
1	Invoice No.	
2	INV8890	
3	INV2355	
4	INV4180	
5	INV1071	
6	INV1725	
7	INV8890	

SHORTCUTS

32. If you have a number of open workbooks and you want to close them all, this can be done by using the Shift key.

- Hold down the **Shift key** as you select **File** on the **Menu** bar.
- You will notice that there is a **Close All option**.
- Choose this, and all your workbooks are closed.
- You will, of course, be prompted to save changes on each open workbook, if necessary.

33. To quickly enter today's date in a cell without having to type the formula =Today (), one can do the following:

- To enter the date press CTRL + ; (Ctrl and semicolon simultaneously)
- To enter the time press CTRL+Shift+ ; (Ctrl, shift colon simultaneously)

	A	B
1	Shortcut	Result
2	Ctrl + ;	05/11/2007
3	Ctrl + Shift + ;	12:00

34. To quickly insert a new worksheet.

- Select the worksheet to the right of where the new worksheet will be inserted
- Press Shift+F11

PAGESETUP

- 35. To use the same printing settings for a number of worksheets, without having to manually setup each worksheet, you group the worksheets together.**
- Select the worksheet whose print settings you want to copy.
 - Group** this worksheet together with the worksheets that need to have the same settings.
 - From the **File** menu, select **Page Setup**, and then select **OK**.
 - The page settings from the worksheet selected in step 1 are copied to all of the selected worksheets.
- 36. When you need to print different ranges for different departments in the same spreadsheet, create Custom Views so the settings don't need to be redone every time.**
- Before defining the print area, hide the rows and columns you do not want to print, and set up the spreadsheet as desired.
 - From the **View** menu, select **Custom Views**. Select **Add**.
 - In the **Add View** dialog box, type the name of the view in the **Name box**, and then select **OK**.
 - Repeat until all different reports have been customised.
 - From any worksheet in the workbook, select the desired **Custom View** from the **Custom View box**.
 - Press Ctrl+ P. In the **Print dialog box**, click **OK**.
- 37. Use the 'Remove Page Breaks' Function when the page breaks need to be reset.**
- Change your view to **Page Break Preview**.
 - View, Page Break Preview**.
 - Right click on any cell on the worksheet.
 - Select Reset **All Page Break**.

38. To have the word "Confidential" printed on Financial Statements reports, use WordArt and create a watermark.

- a. Right-click on a **toolbar** and select the **WordArt toolbar** from the shortcut.
- b. On the **WordArt toolbar**, select the **Insert WordArt** icon.
- c. From the **WordArt Gallery**, select your choice of format, and then **OK**.
- d. In the **WordArt Edit Text dialog box**, type **Confidential**, select the font and size, and then select **OK**.
- e. Right-click the **WordArt**, select **Format WordArt** from the shortcut menu, and then select **the Colors and Lines tab**.
- f. In **Fill**, select **No Fill** from the **Colour** dropdown list.
- g. In the line section adjust the colour and line format to black.
- h. Select **OK**.
- i. Right-click the WordArt, select **Order** from the shortcut menu, and then **Send to Back**.
- j. Adjust the WordArt to suit the sheet.

39. To apply the same 'Header and Footer' to some of the worksheets on a workbook, 'Group' (select the required sheets together and then create the 'Header and Footer'.

- a. Select the worksheets - if the worksheets are adjacent to one another, select the sheet tab of the first sheet in the range, hold the Shift key then select the last sheet in the range.
- b. If the sheets are not adjacent to one another then select the first sheet, hold the Ctrl key, select all other sheet tabs of the sheets you wish to apply the header and footer to.
- c. Select **File, Page Setup, Header and Footer**.
- d. Apply the header and footer.
- e. To ungroup the sheets, hold the shift key then click on the first sheet tab within the group.

40. When you click on a cell which contains a very long formula, it often takes up more than 2 lines of text in the formula bar and it hides the first rows of your spreadsheet. To overcome this insert a blank row at the top of the worksheet and increase the row height.

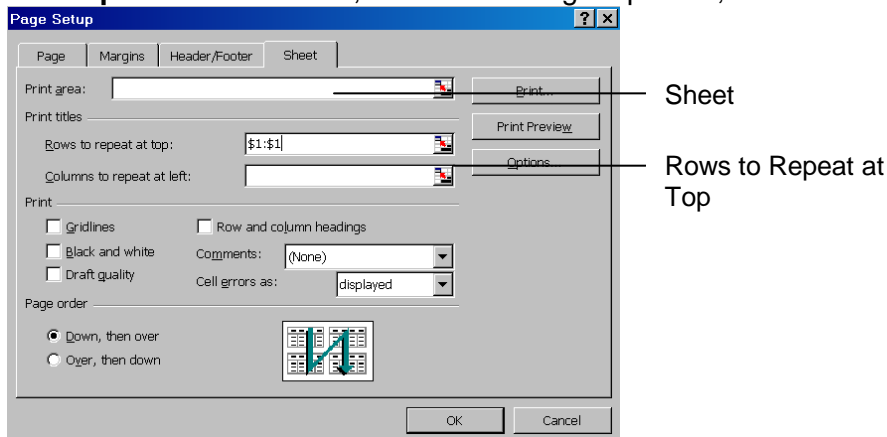
- a. To insert a blank row – Right click on Row 1, then select **Insert, Rows**.
- b. Increase the row height of the new row by selecting, **Format, Row, Height**, then type in a high number eg.50

41. To display two worksheets in a workbook on the screen, at the same time, in order to make it easier to complete work - do the following:

- a. Open the workbook; activate one of the worksheets you need to display.
- b. Select **Window, New Window**.
- c. The workbook will open a second time. In this workbook activate the second sheet you need to display.
- d. Now select **Window, Arrange Windows**.
- e. Tick the check box "**Windows of active workbook**", choose the display you want eg tiled, vertical etc.
- f. Select **OK**.

42. To get the heading of the report to be repeated on each page when it prints, one must set the print titles using Page Setup.

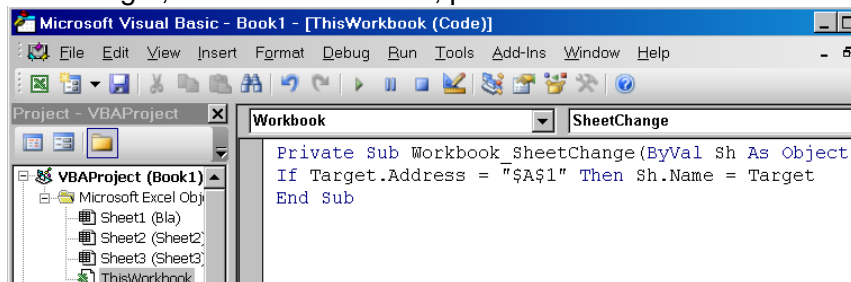
- Select **File, Page Setup**.
- Select the heading tab **Sheet**.
- In the "**print titles**" section, to have headings repeated; fill in the section "**Rows to repeat at top**".



- To have a column of information repeated on each page, fill in "**columns to repeat at left**".
- Select **OK**.

43. How to match the name of a worksheet tab to a cell on the worksheet e.g. A1, by adding code to the Worksheet Module.

- Select, **Tools, Macro, Visual Basic Editor**.
- On the left, in the Project window, select "**This Workbook**".
- On the right, in the Code window, paste the below code.



```
Private Sub Workshop_SheetChange(ByVal Sh As Object, ByVal Target As Range)
If Target.Address = "$A$1" Then Sh.Name = Target
End Sub
```



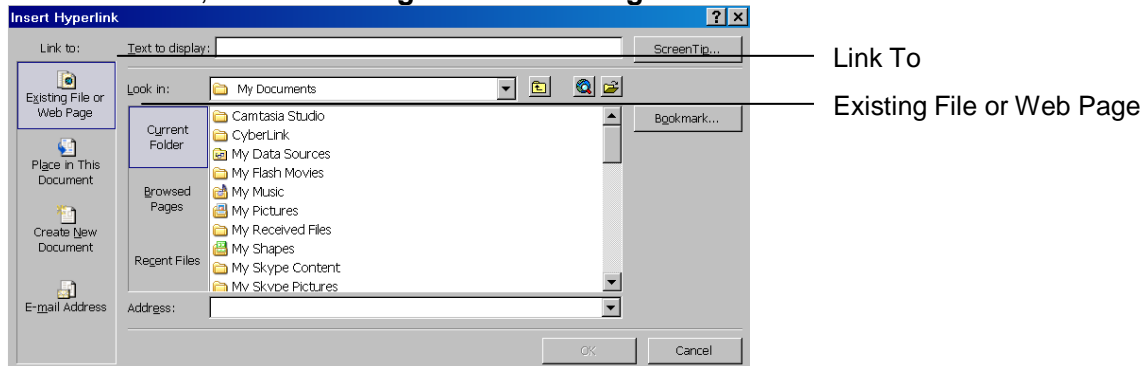
End Sub

- d. Select, **File, Close** and Return to Microsoft Excel.

HYPERLINKS

44. To open another file from inside a workbook, it is best to use a hyperlink.

- Select the cell where you want the link to be activated from.
- Right click and select **Hyperlink**.
- Under **Link To**, select **Existing File or Web Page**.



- Navigate to the desired file.
- Select the desired file and select **OK**.

45. How to select a hyperlink without activating it.

- Press and hold the mouse button on the cell for a few seconds.
- To select a graphic with a hyperlink, CTRL and click the graphic.



EXCEL OPTIONS

46. To always show all the menu items and not only the recently used ones, use the 'Customise' option on the tools menu.
- Select **Tools, Customise**.
 - Select the **Options tab**.
 - Clear the check box "**Menus show recently used commands first**"
 - Select **OK**.
47. You can prevent Excel from prompting you to update links when you open a workbook which contains links to other workbooks, by changing the settings on the Option screen to have it update the links automatically.
- Select **Tools, Options**.
 - Select the **Edit tab**.
 - Clear the check box **Ask to update automatic links**.
 - Select **OK**.

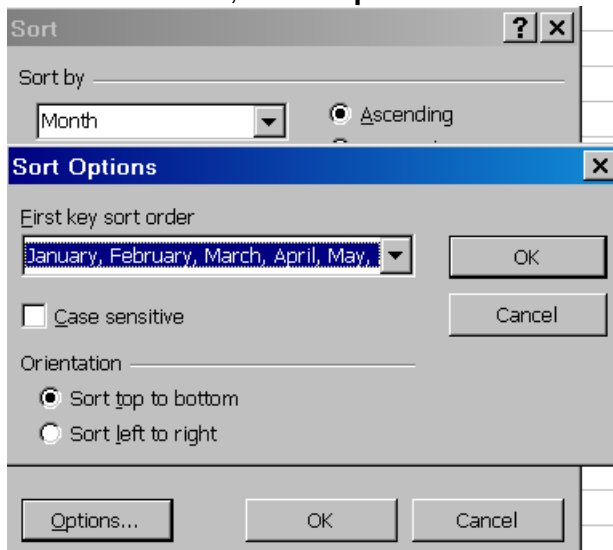
SORTING

48. Use SORT to get rid of empty rows in between my data.

- Select all columns containing data.
- From the Standard toolbar, select the Sort Ascending.
- The empty rows will be sorted to the bottom.

49. If you have a month column, and would like to sort your months in month order, you will need to use a custom sort.

- Select any cell in the month column.
- From the **Menu** bar, select **Data, Sort**.
- At the bottom left, select **Options**.



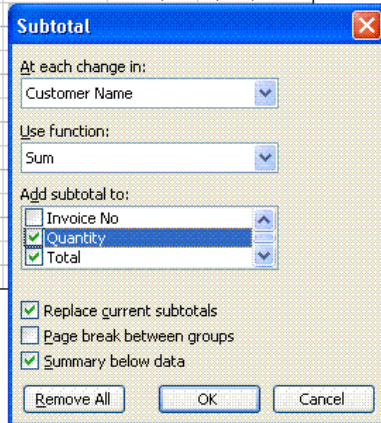
- Select the months as your **First key sort order**.
- Select **OK**.

SUBTOTALS

50. How to subtotal under more than one field by using Subtotals.

- Sort the fields which you need to have subtotaled.
- In the example (see screenshot), Customer Name and Area have been sorted.

Date	Customer Name	Area	Invoice No	Quantity	Total
01-04-06	ABD Co	Dbn	2120	454	94,584.00
10-04-06	ABD Co	Dbn	2131	3,333	5,656,657.00
01-04-06	Joe Bloggs	Jhb			
02-04-06	Joe Bloggs	Jhb			
10-04-06	Joe Bloggs	Jhb			
01-04-06	John Brown	Jhb			
10-04-06	John Brown	Jhb			
01-04-06	NewCo	CPT			
01-04-06	Whittings	PE			
02-04-06	Whittings	PE			
04-04-06	Whittings	PE			
01-04-06	XYZ Ltd	EL			
02-04-06	XYZ Ltd	EL			
03-04-06	XYZ Ltd	EL			



- Select **Data** then **Subtotals**.
- Make the selection in the **At each change in** dropdown list, eg. Customer Name.
- In **Add Subtotal to**, select the **Quantity** and **Total** checkboxes.
- Repeat steps 3 and 4, and select **Area**.
- Deselect** the **Replace current subtotals** checkbox, and then select **OK**.

Alchemex Contact Information	
Sales	sales@alchemex.com
Support	support@alchemex.net
Website	www.alchemex.com
Forum	www.alchemex-forum.com
Online Academy	www.alchemexacademy.com
Knowledgebase	www.alchemex.com
Free Trial Software download	www.alchemex.com
Customer References	www.alchemex.com
If you know of anyone who will benefit from using Alchemex - PLEASE contact Sales.	