

Question: Is there any way that I can work out the day of the week given the full day/month/year date?

Answer: Yes, using a combination of the DATE function and Format options.

Process (Excel 2003 and 2007):

The DATE function in Excel requires three parameters: a day value, a month value and a year value. Given those three parameters, it will return those numbers in a standard DD/MM/YY format. We can use the Custom Text option to then change this to the actual day of the week.

- 1 In cell A1, type in **YEAR**
- 2 In cell B1, type in **MONTH**
- 3 In cell C1, type in **DAY**
- 4 In cell D1, type in **DAY OF THE WEEK**
- 5 In cell A2, type in **2000**
- 6 In cell B2, type in **10**
- 7 In cell C2, type in **1**

You should now have the following:

	A	B	C	D
1	Year	Month	Day	Day Of The Week
2	2000	10	1	
3				

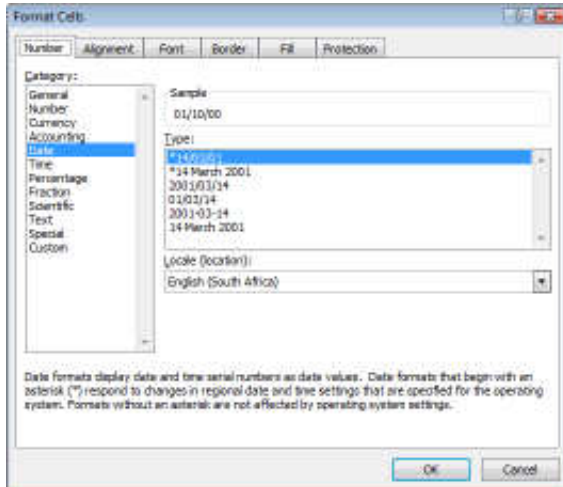
- 8 In cell D2, type in `=DATE(A2,B2,C2)`

	A	B	C	D
1	Year	Month	Day	Day Of The Week
2	2000	10	1	<code>=DATE(A2,B2,C2)</code>
3				
4				

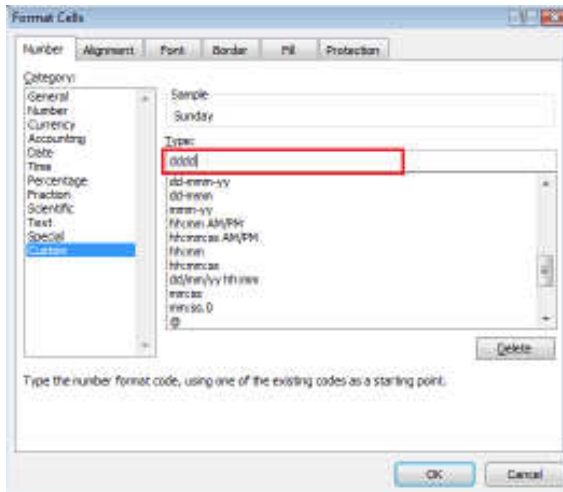
- 9 Press **Enter**. You will now have a date in cell D2

	A	B	C	D
1	Year	Month	Day	Day Of The Week
2	2000	10	1	01/10/00
3				
4				

10 Press **Ctrl+1**, which will bring up the **Format** window.



11 Select the **Number** tab, then **Custom** in the **Categories** list. In the **Type** field, enter **dddd** and click **OK**



This will change the format of the cell to represent the date as a day of the week.

	A	B	C	D
1	Year	Month	Day	Day Of The Week
2	2000	10	1	Sunday
3				