

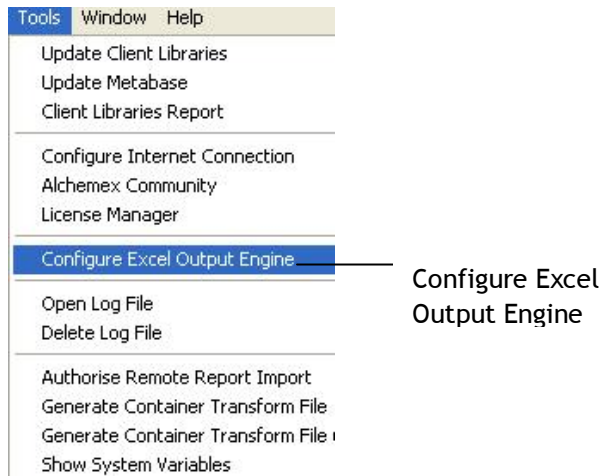
## Delaying Recalculation

I have a large report with several companies that are being consolidated. Each time I run the report it renders and calculates data. Is there a way to force Alchemex not to calculate and then do the calculation by macro once all data has been rendered?

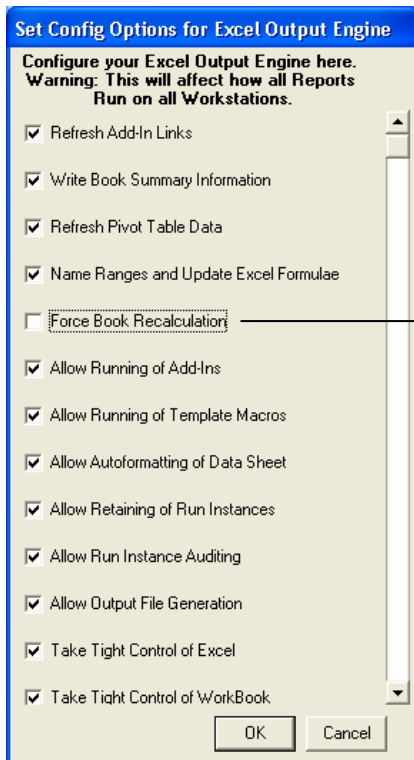
Yes, in Alchemex you can delay the recalculation.

### Method 1

1. In the Administrator module, go to Tools, then go to Configure Excel Output Engine



2. On the Set Config Options deselect Force Book Recalculation



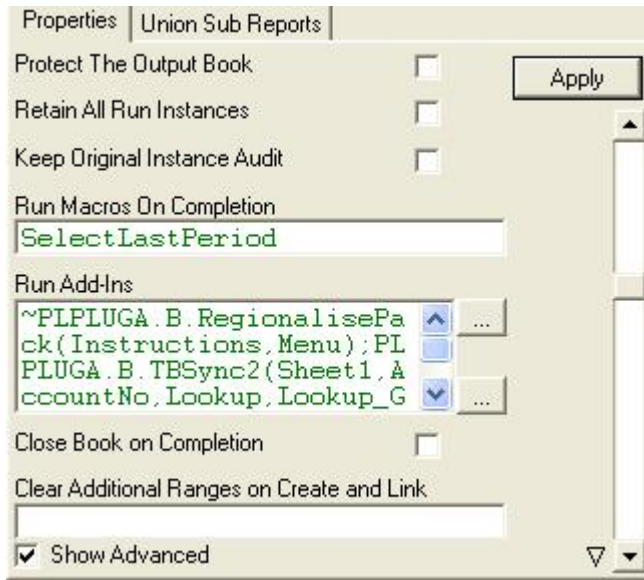
Force book recalculation

3. Select OK
4. This will affect All reports

## Method 2

**Please note:** Only holds true if on the latest version of Alchemex

1. Edit the Add-ins by adding a ~ before the Run Add-ins



The ~ will delay recalculation during the "Run Add In" stage of the report runtime and is specific to that report being run and will therefore not affect all reports as would Method 1.