

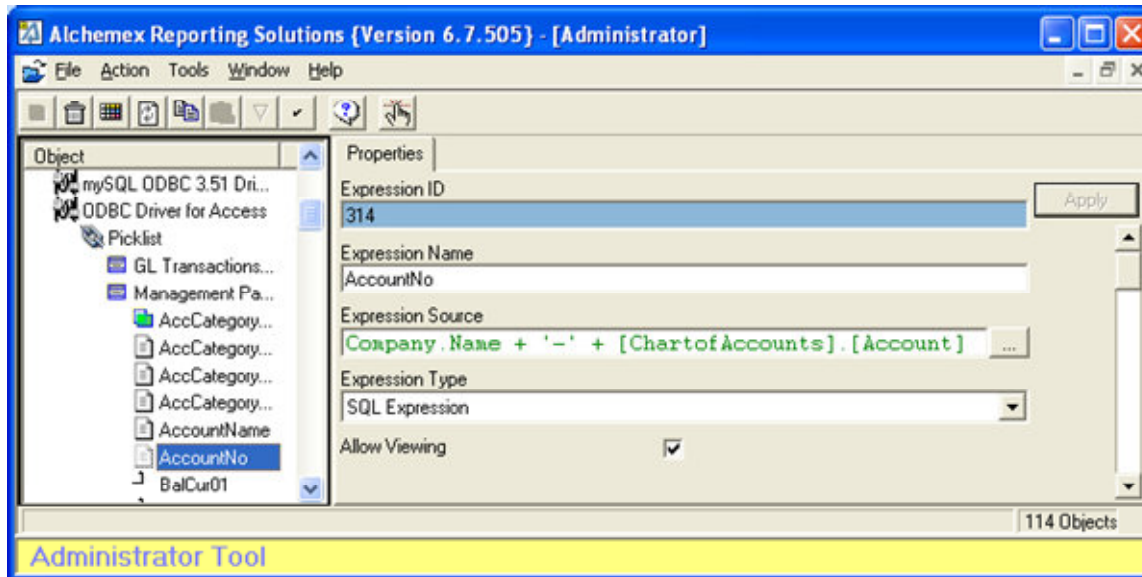
Adding a company name to an account number

When consolidating multiple databases we sometimes need to be able to see which accounts belong to which Company dataset in our Income Statement and Balance Sheet.

We do this by appending the Company name to the account number to ensure that each account number is unique.

Amend the expression containing the account number simply by adding the company as follows for the database we are using for this example:

Company.Name + '-' + [ChartofAccounts].[Account]



If you run a "Sample Data" you will notice that all your account numbers have the Company Name appended to it.