

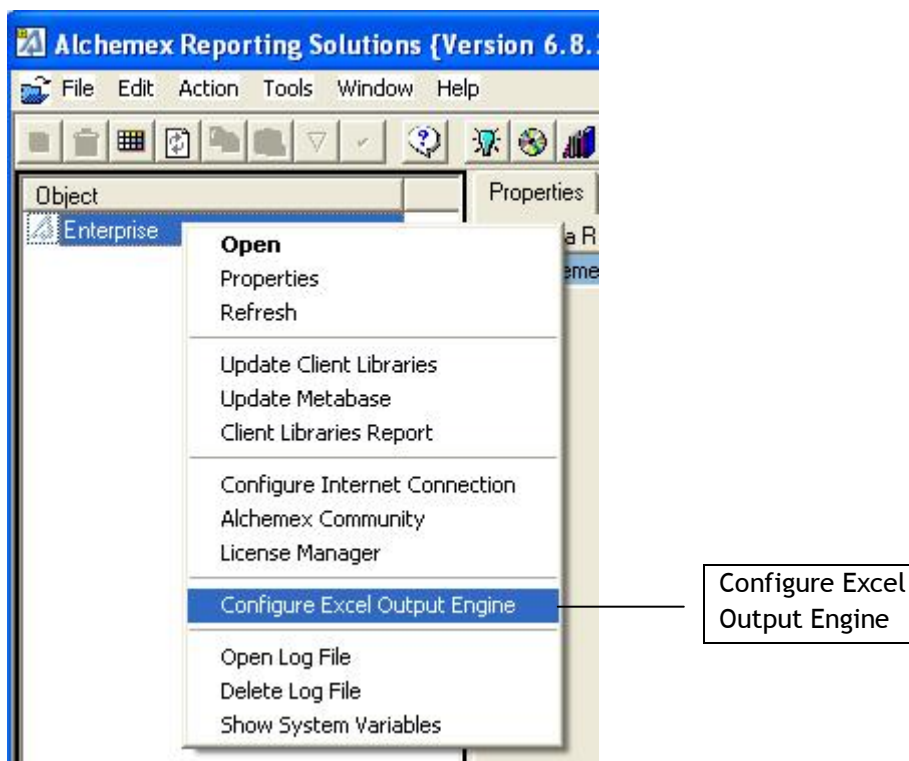
Activate Reports

I would like to ensure Excel is activated and brought to the front of my desktop when a report finishes running.

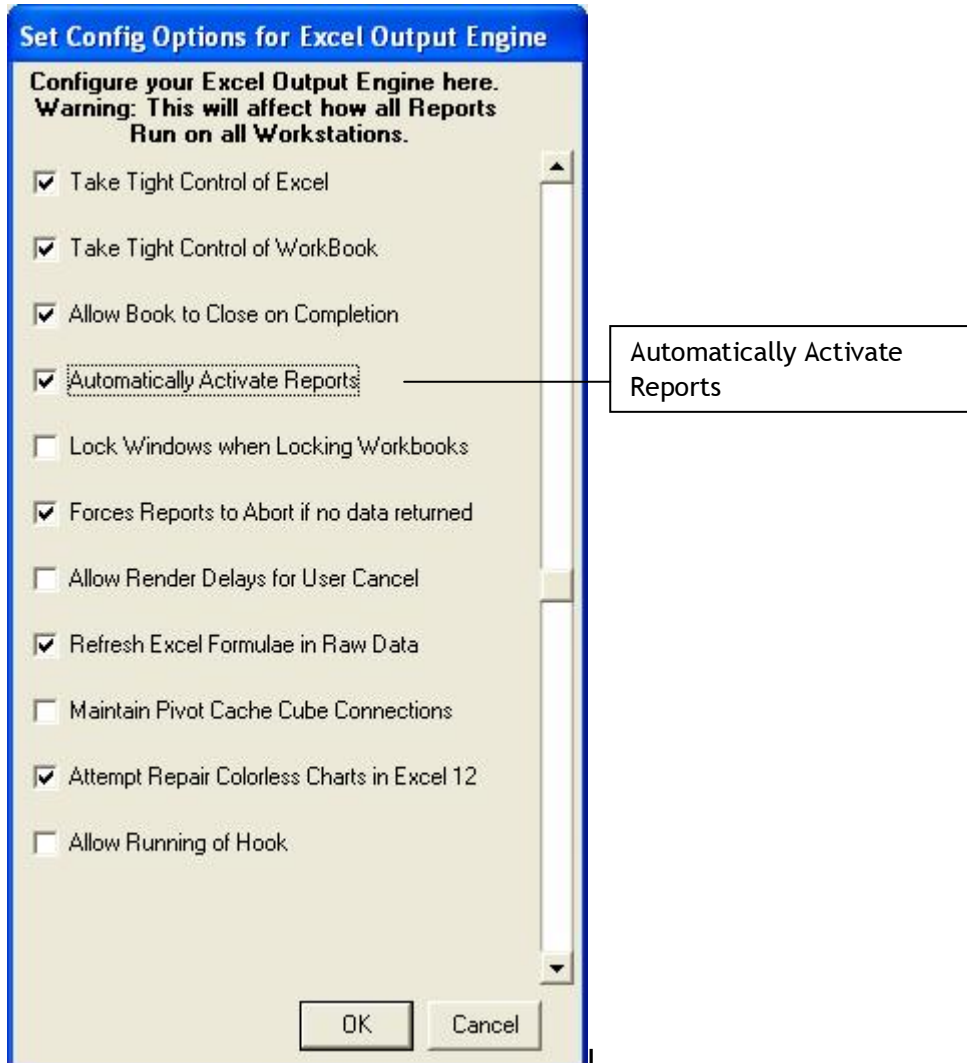
You need to ensure the Automatically Activate Reports Option is selected.

Method

1. When opening the Administrator Module, right click on Enterprise and select Configure Excel Output Engine



2. Make sure the Automatically Activate Reports option is selected (it normally is by default)



3. Select OK
4. Now when a report is completed, Excel will be activated and brought to the front of your desktop session.