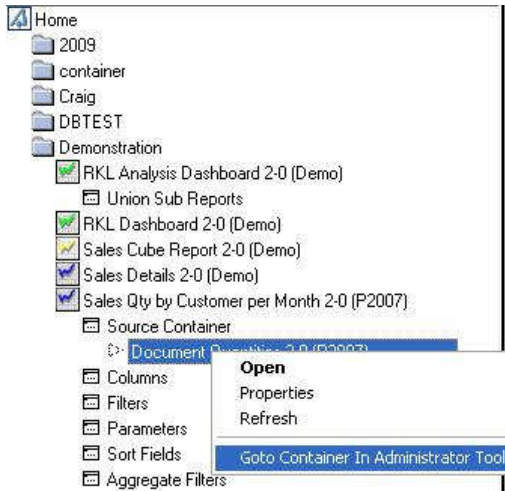


## View Data Container from Report Manager

At times you might want to view and directly access, from the Report Manager, the Source Container that your report is based on. This is useful to add expressions or tables directly to the correct container without having to spend time locating the source container in the Administrator Module.

To do this:

1. Double click the report
2. Double click Source container
3. Right click the report that appear under the Source Container option
4. Select Go to Source container



5. The following message will appear asking if you would like to open another instance of the Administrator Module



6. Select Yes



Software • Training • Support

7. The container that the selected report is based on will now be shown in the Administrator Module

- ODBC Driver for Access
- RKL Trading Demo
  - Dashboard Sales Details 2.0
  - Document Quantities 2-0 (P2007)
  - GL Transactions 2-0
  - Inventory Master 2-0 (AE52)
  - Management Pack 2-0
  - Management Pack 2-0
  - Management Pack 2-0 (P2007)
  - Management Pack 2-0 (P2007)
  - Management Pack 2-0 (P2007)
  - Sales Details 2.0
  - Sales Master 2-0 (P2007)
  - Sales Master 2-0 (P2007)
  - Stock on Hand 2-0 (Ev3)
  - Stock ReOrders 2.0