

## Add Dataless Report

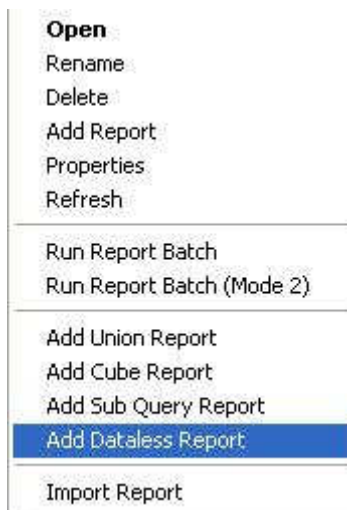
Picklists allow you to consolidate data from same and disparate databases. What if you need to consolidate data from sources other than a database?

Alchemex allows you to Add a Dataless Report for the purpose of consolidating data from sources other than a database.

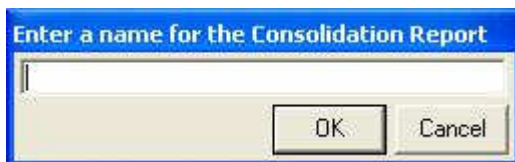
The Dataless report does not access any database but rather activates an Excel workbook that contains Macros designed to consolidate information from workbooks that you have stored previously in other reports.


## Method

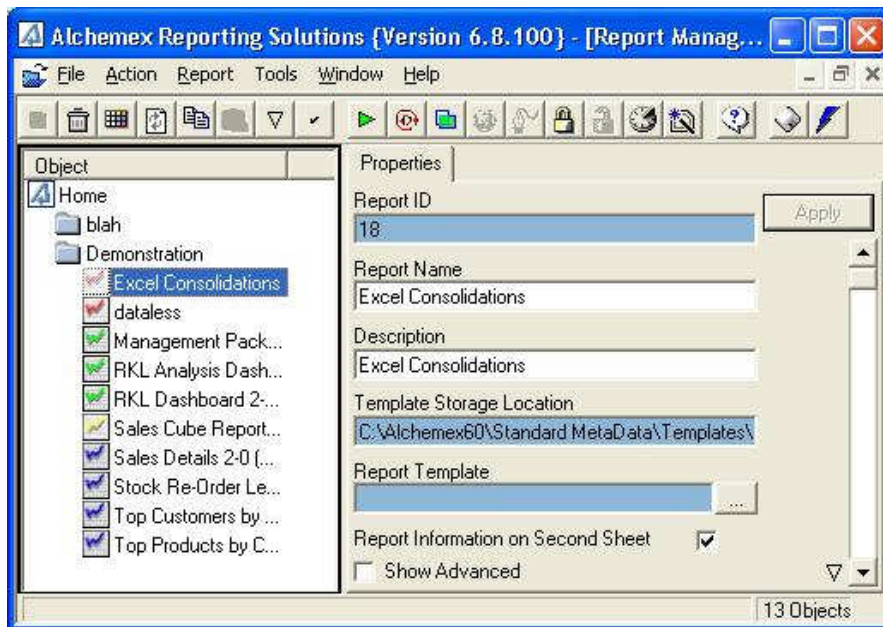
1. In the Report Manager Module, right click on the report folder
2. Select Add Dataless Report



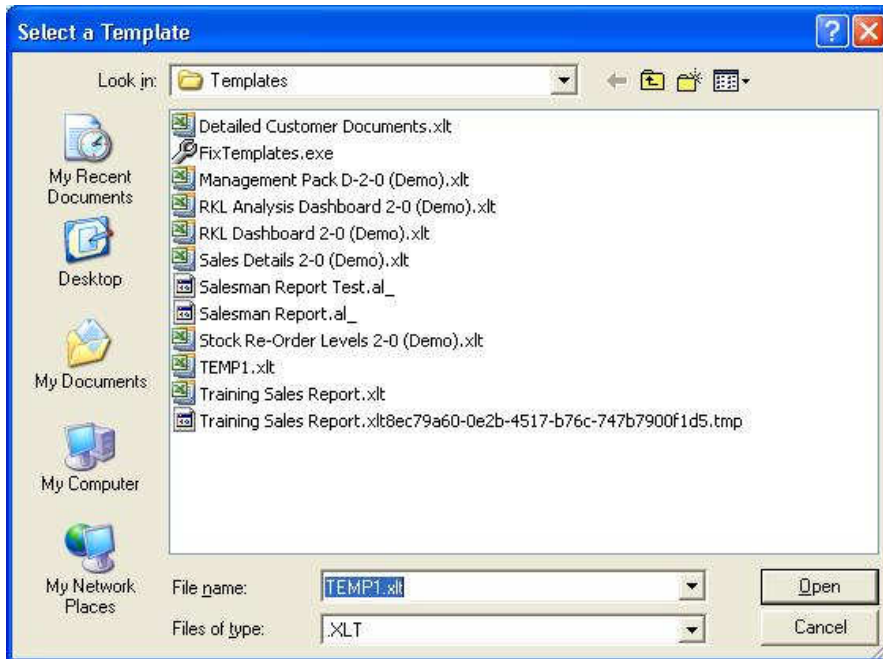
3. Enter a name for the Dataless report in the displayed box



4. Select OK
5. Notice the report icon  , indicating that it is a dataless report
6. You will now need to link this Dataless report to an Excel book that contains the functional macros
7. Select the Report and then select the browse button next to the Report Template



8. Navigate to the report that contains the functional macros



9. Select Open

10. The report will now be linked to the Dataless Report folder:

