

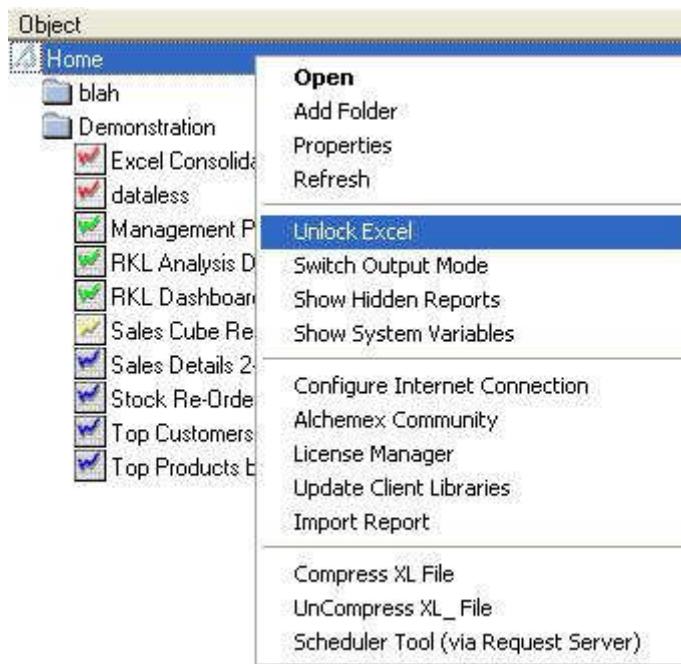
## Unlock MS Excel

I made some changes to a report, now when the report runs, Excel is frozen. How can I unlock Excel?

When Alchemex runs a report out to Excel it takes control of Excel and prevents user interaction with Excel. If a report runs into rendering problems, it is possible that Excel can be left locked. Excel can however be unlocked in Alchemex.

### Method

1. In the Report Manager Module, select the Home object
2. Rightclick and select Unlock Excel



3. Excel will now be unlocked and user interaction will be allowed again