

Add-In Functions

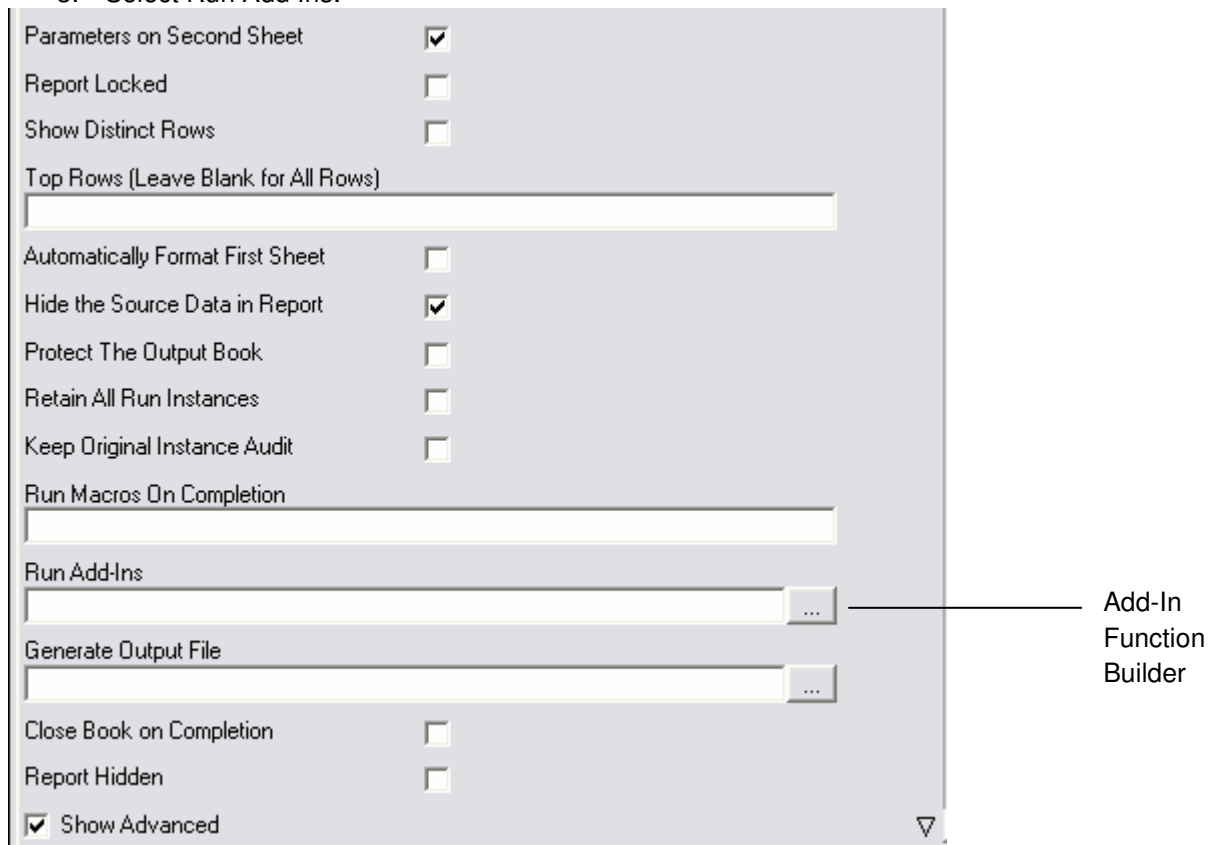
Alchemex supplies Add-In modules which are constantly being upgraded. These modules extend the functionality of Alchemex with Excel. These Add-In modules are supplied as is and are used at your own risk.

To use the Add-In wizard press the "Add-In Function Builder" button next to the "Run Add-Ins" property of a report. To make sure that you always have the latest set of Add-In functions available keep your Alchemex software up to date.

The Add-in functions available are self documenting. For a description of a given function select the function and view the Function Description in the Add-in window.

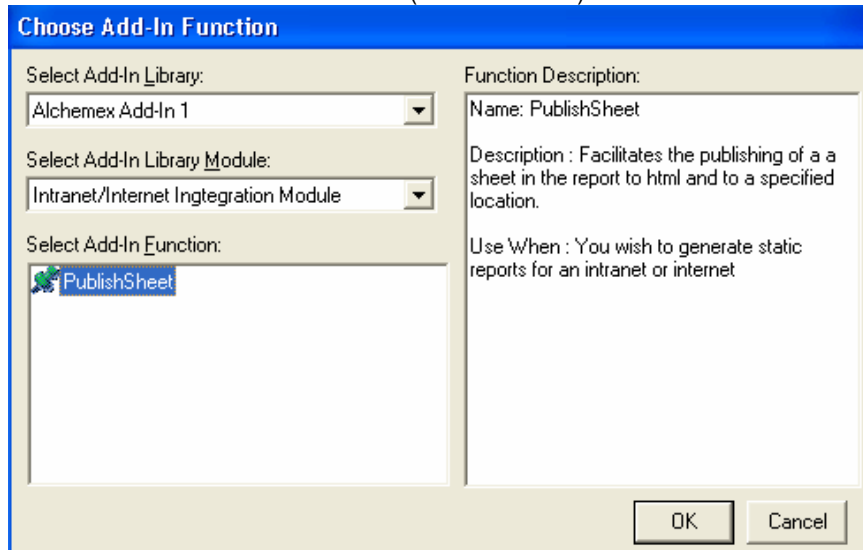
Example of an Add-In function: Making Reports available on the Internet/Intranet

1. Select the report you want to publish to a website.
2. Tick show advanced option on the properties tab.
3. Select Run Add Ins.

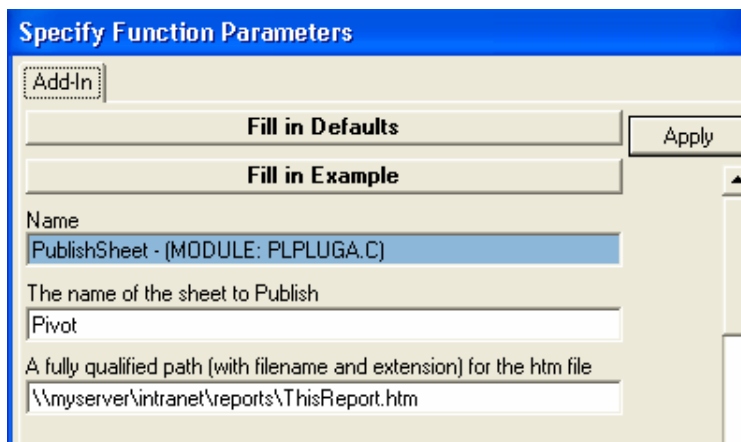


The screenshot shows a dialog box with various options and fields. The 'Run Add-Ins' field has a button with three dots next to it, which is labeled 'Add-In Function Builder' with an arrow. Other options include 'Parameters on Second Sheet' (checked), 'Report Locked' (unchecked), 'Show Distinct Rows' (unchecked), 'Top Rows (Leave Blank for All Rows)' (text input), 'Automatically Format First Sheet' (unchecked), 'Hide the Source Data in Report' (checked), 'Protect The Output Book' (unchecked), 'Retain All Run Instances' (unchecked), 'Keep Original Instance Audit' (unchecked), 'Run Macros On Completion' (text input), 'Generate Output File' (text input), 'Close Book on Completion' (unchecked), 'Report Hidden' (unchecked), and 'Show Advanced' (checked).

4. Select an Add-In Function
5. From the Choose an Add-in function box
6. Select an Add-in Library
7. Select an Add-in Library module
8. Select an Add-in function (Publish sheet) Select OK



9. Specify function parameters.
10. Name, the name of the sheet to publish (Pivot)
11. Fully qualified path, (with filename & extension) for the HTML file.
Example: **\\myserver\intranet\reports\ThisReport.htm**



12. The Add-In function should now appear in the reports Run Add-Ins property field.

Whenever this report is run the Add-In will now be executed. To edit the parameters of an Add-In function that has been specified already simply press the Add-In Function Builder button next to the Run Add-Ins box on your report properties and select the Function that you wish to edit, and then follow the same steps as above.