

I would like to hide the source or raw data in my final report. Is this possible?

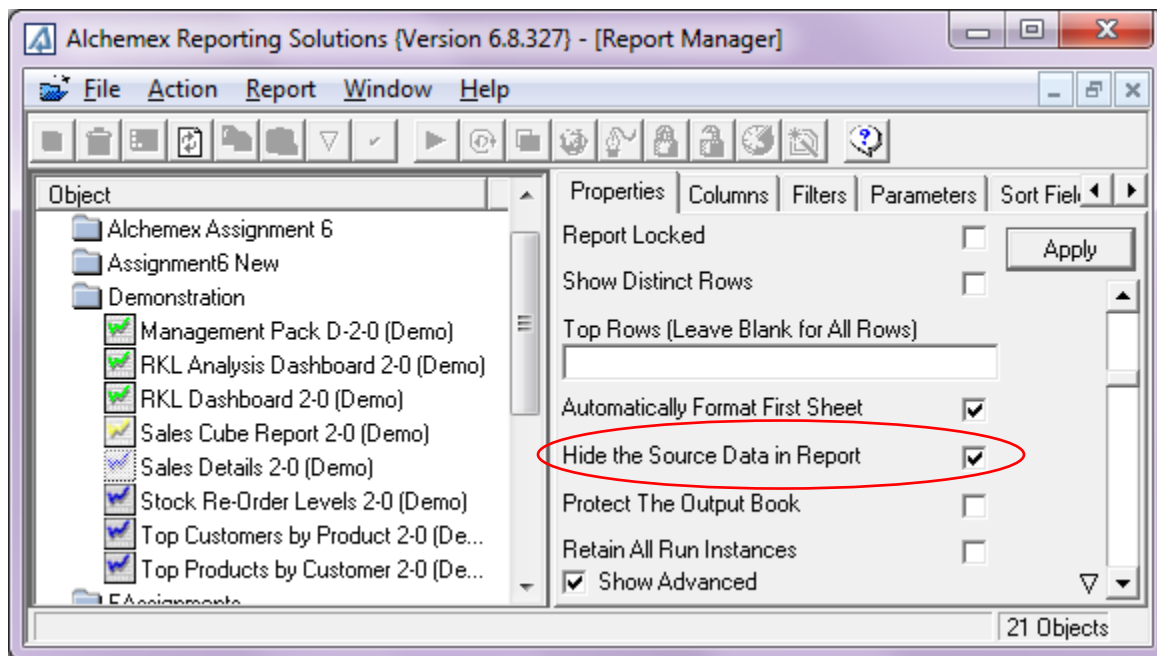
Yes, you can hide the first sheet containing your raw data.

Method

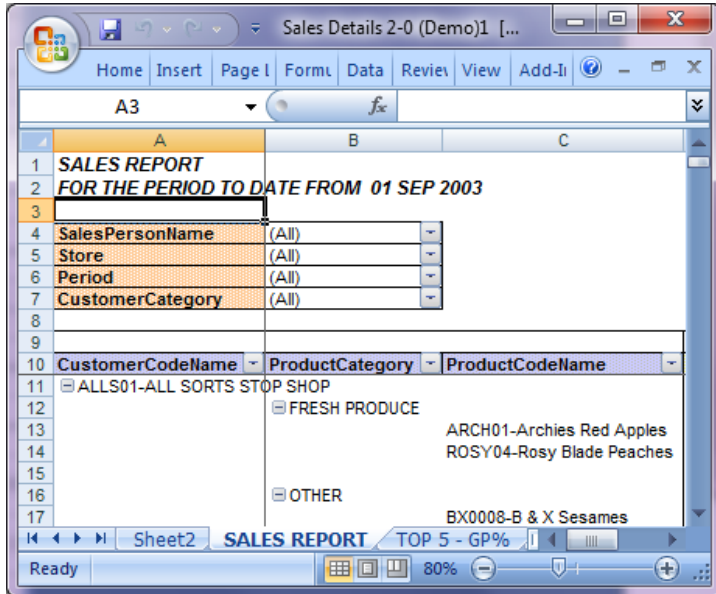
In **Report Manager**, select your report.

In the **Properties** window, click **Show Advanced**.

Click **Hide the Source Data in Report** and click **Apply**.



When running your report, Sheet1 containing the raw data will be hidden.



Normal Excel functionality can be used to unhide the sheet.

(Right-click any sheet and select **Unhide**)

