

I would like to create a Pivot to neaten my data but do not know Excel too well. Is there an easy way within Alchemex to create a Pivot?

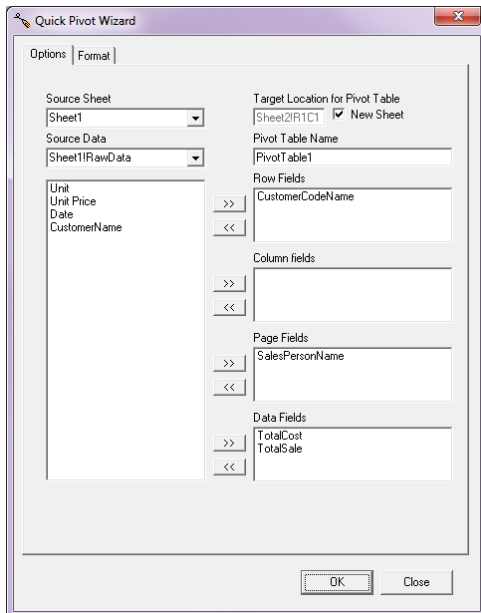
Yes, you can use an Alchemex add-in to quickly create a Pivot.

### **Method**

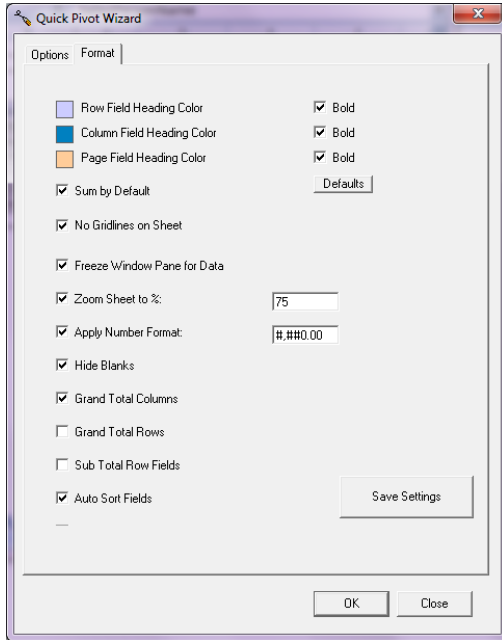
Run your report, in Excel select the **Add-ins tab** on the Ribbon, and in the Report Tools group select **Quick Pivot**.



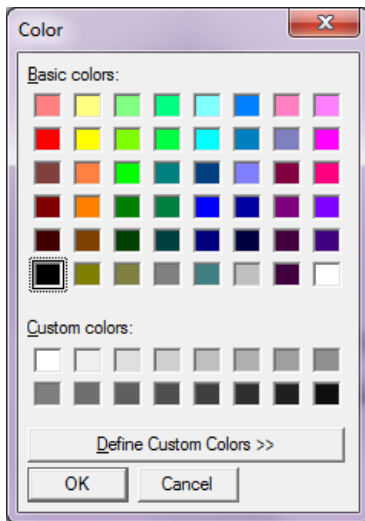
The **Quick Pivot Wizard** will open, make your selections, it will automatically select sheet1 as **Source Sheet**.



Select the **Format** tab for any changes



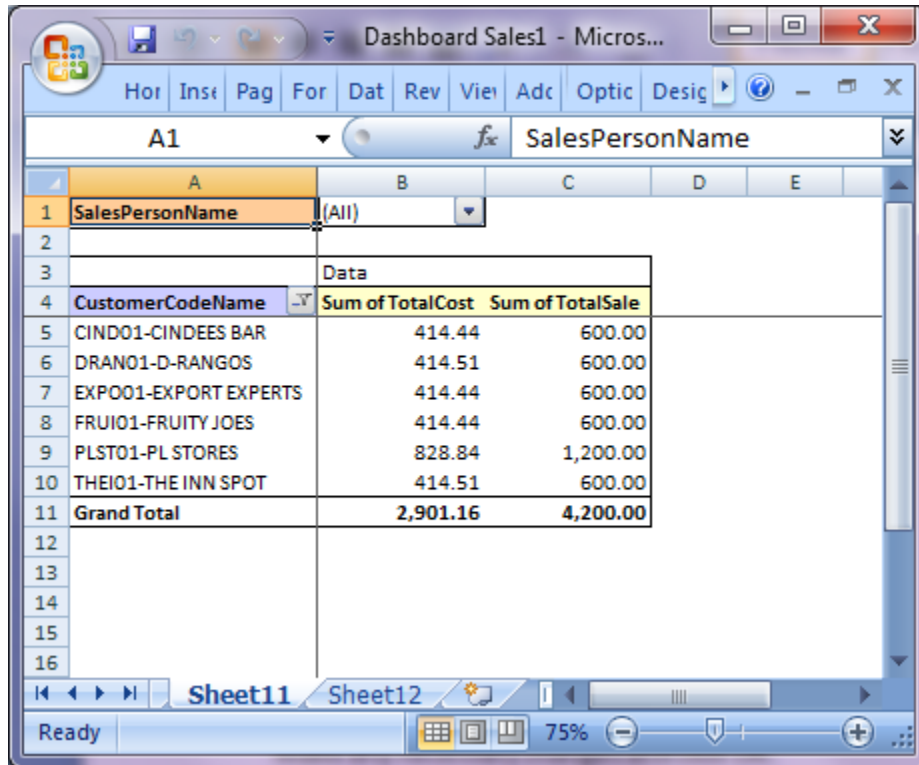
Selecting any of the 3 color boxes in the **Format** window will open the **Color** window:



Make any necessary changes and click **OK**.

Click **OK** and **Close**

You now have a quick Pivot with only a few clicks:



Dashboard Sales1 - Micros...

Hor Inst Pag For Dat Rev Viei Adc Optic Desig

A1 SalesPersonName

| CustomerCodeName      | Sum of TotalCost | Sum of TotalSale |
|-----------------------|------------------|------------------|
| CIND01-CINDEES BAR    | 414.44           | 600.00           |
| DRAN01-D-RANGOS       | 414.51           | 600.00           |
| EXPO01-EXPORT EXPERTS | 414.44           | 600.00           |
| FRUI01-FRUITY JOES    | 414.44           | 600.00           |
| PLST01-PL STORES      | 828.84           | 1,200.00         |
| THEI01-THE INN SPOT   | 414.51           | 600.00           |
| <b>Grand Total</b>    | <b>2,901.16</b>  | <b>4,200.00</b>  |

Sheet11 Sheet12

Ready 75%