

Adding my own defined System Variables

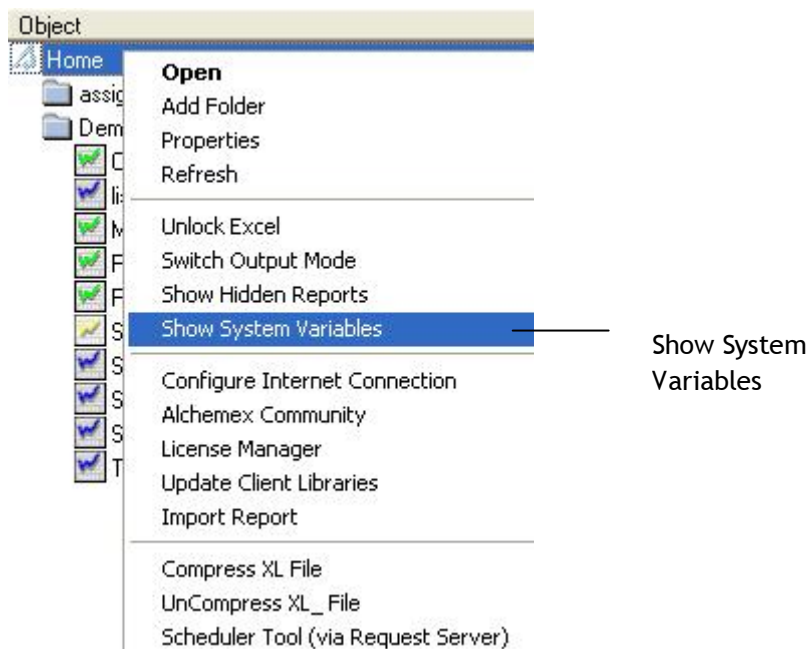
Our company has worldwide branches and would like to cater for the different Month and Year ends. I am currently using the System Variable @DATE@, but can I add my own variable?

Yes you can, by defining the Variable in the Alchemex.ini file.

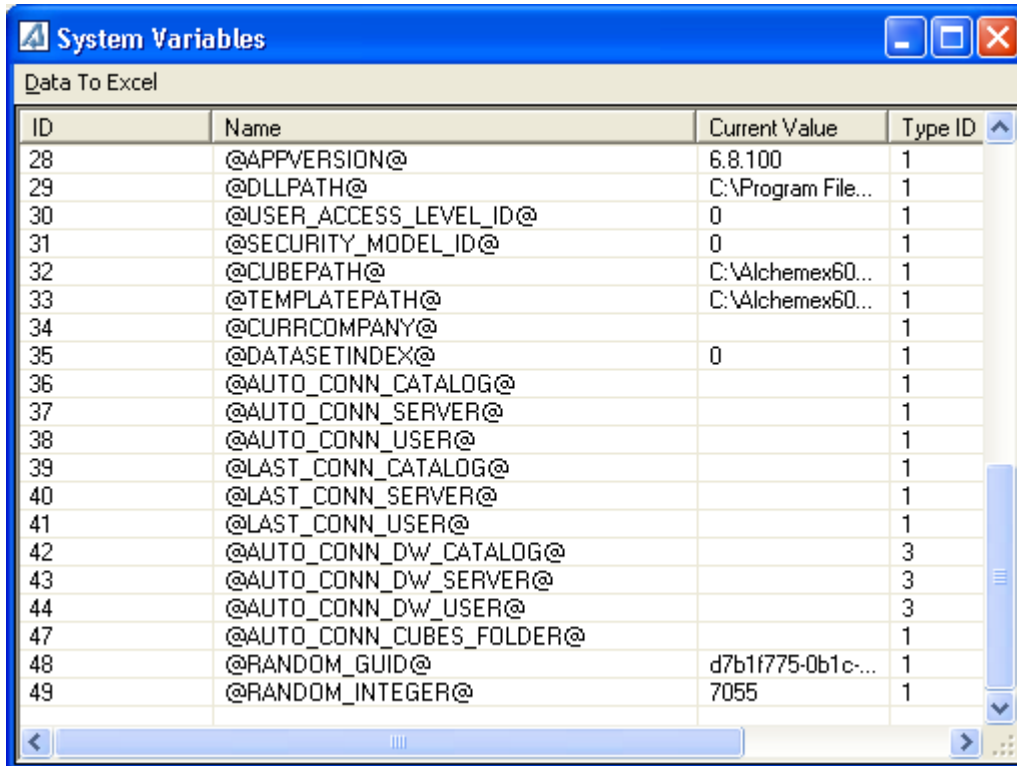
Method

To view the existing list of System Variables:

1. From the Report Manager Module, right-click on Home and select Show System Variables, or from the Administrator Module, right-click on Enterprise and select Show System Variables

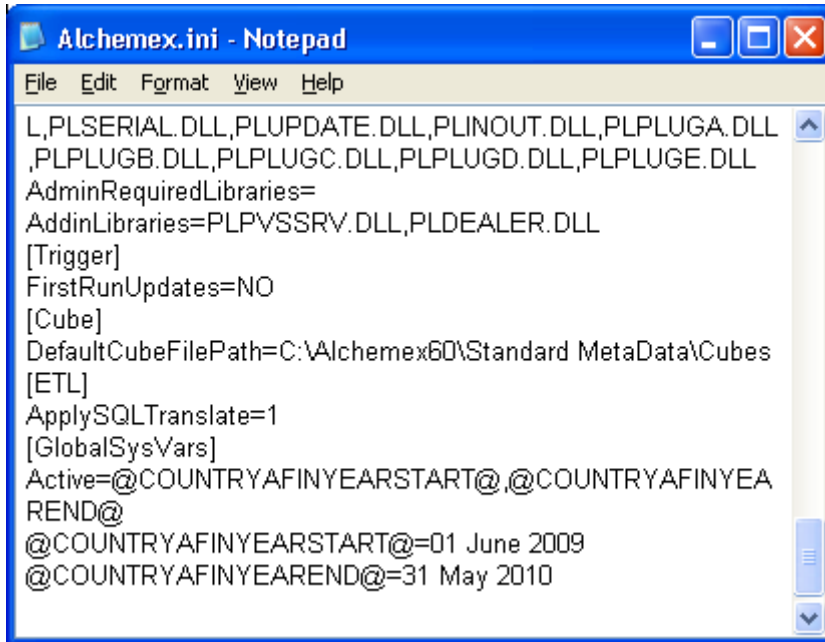


2. This will show all currently defined System Variables



ID	Name	Current Value	Type ID
28	@APPVERSION@	6.8.100	1
29	@DLLPATH@	C:\Program File...	1
30	@USER_ACCESS_LEVEL_ID@	0	1
31	@SECURITY_MODEL_ID@	0	1
32	@CUBEPATH@	C:\Alchemex60...	1
33	@TEMPLATEPATH@	C:\Alchemex60...	1
34	@CURRCOMPANY@		1
35	@DATASETINDEX@	0	1
36	@AUTO_CONN_CATALOG@		1
37	@AUTO_CONN_SERVER@		1
38	@AUTO_CONN_USER@		1
39	@LAST_CONN_CATALOG@		1
40	@LAST_CONN_SERVER@		1
41	@LAST_CONN_USER@		1
42	@AUTO_CONN_DW_CATALOG@		3
43	@AUTO_CONN_DW_SERVER@		3
44	@AUTO_CONN_DW_USER@		3
47	@AUTO_CONN_CUBES_FOLDER@		1
48	@RANDOM_GUID@	d7b1f775-0b1c-...	1
49	@RANDOM_INTEGER@	7055	1

- To define your own System Variable, go to the Alchemex.ini file. By default this is installed under the Alchemex60 folder on the C drive.

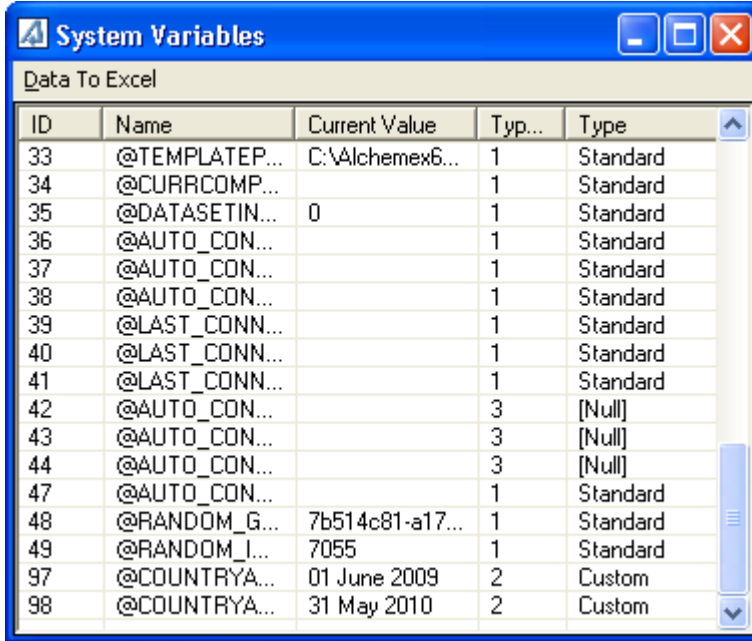


```
Alchemex.ini - Notepad
File Edit Format View Help
L,PLSERIAL.DLL,PLUPDATE.DLL,PLINOUT.DLL,PLPLUGA.DLL
,PLPLUGB.DLL,PLPLUGC.DLL,PLPLUGD.DLL,PLPLUGE.DLL
AdminRequiredLibraries=
AddinLibraries=PLPVSSRV.DLL,PLDEALER.DLL
[Trigger]
FirstRunUpdates=NO
[Cube]
DefaultCubeFilePath=C:\Alchemex60\Standard MetaData\Cubes
[ETL]
ApplySQLTranslate=1
[GlobalSysVars]
Active=@COUNTRYAFINYEAREND@,@COUNTRYAFINYEAREND@
@COUNTRYAFINYEAREND@=01 June 2009
@COUNTRYAFINYEAREND@=31 May 2010
```

4. Add the following, each variable must be added on a separate line, then save the file:

```
[GlobalSysVars]
Active=@COUNTRYAFINYEAREND@,@COUNTRYAFINYEAREND@
@COUNTRYAFINYEAREND@=01 June 2009
@COUNTRYAFINYEAREND@=31 May 2010
```

5. The new variable will be added under the System Variables:



The screenshot shows a window titled 'System Variables' with a 'Data To Excel' button. The window contains a table with the following data:

ID	Name	Current Value	Typ...	Type
33	@TEMPLATEP...	C:\Alchemex6...	1	Standard
34	@CURRCOMP...		1	Standard
35	@DATASETIN...	0	1	Standard
36	@AUTO_CON...		1	Standard
37	@AUTO_CON...		1	Standard
38	@AUTO_CON...		1	Standard
39	@LAST_CONN...		1	Standard
40	@LAST_CONN...		1	Standard
41	@LAST_CONN...		1	Standard
42	@AUTO_CON...		3	[Null]
43	@AUTO_CON...		3	[Null]
44	@AUTO_CON...		3	[Null]
47	@AUTO_CON...		1	Standard
48	@RANDOM_G...	7b514c81-a17...	1	Standard
49	@RANDOM_I...	7055	1	Standard
97	@COUNTRYA...	01 June 2009	2	Custom
98	@COUNTRYA...	31 May 2010	2	Custom

Please note that because the System Variables are defined in the Alchemex.ini file, Custom System Variables will vary from site to site. If they are used on a report intended for distribution then the same definitions need to be created at the destination site. Ordinary System Variables are available to all Alchemex sites without having to create them.